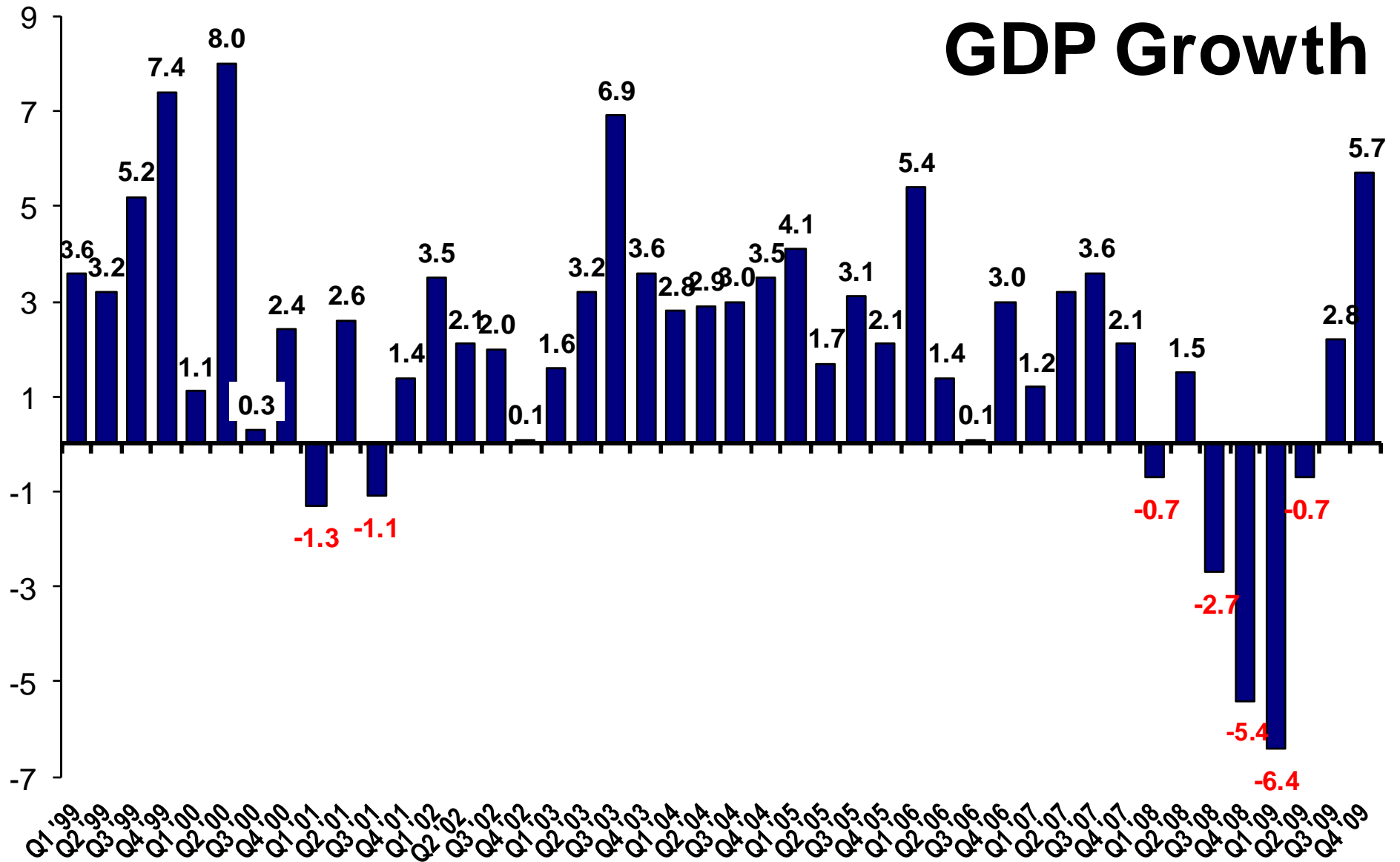
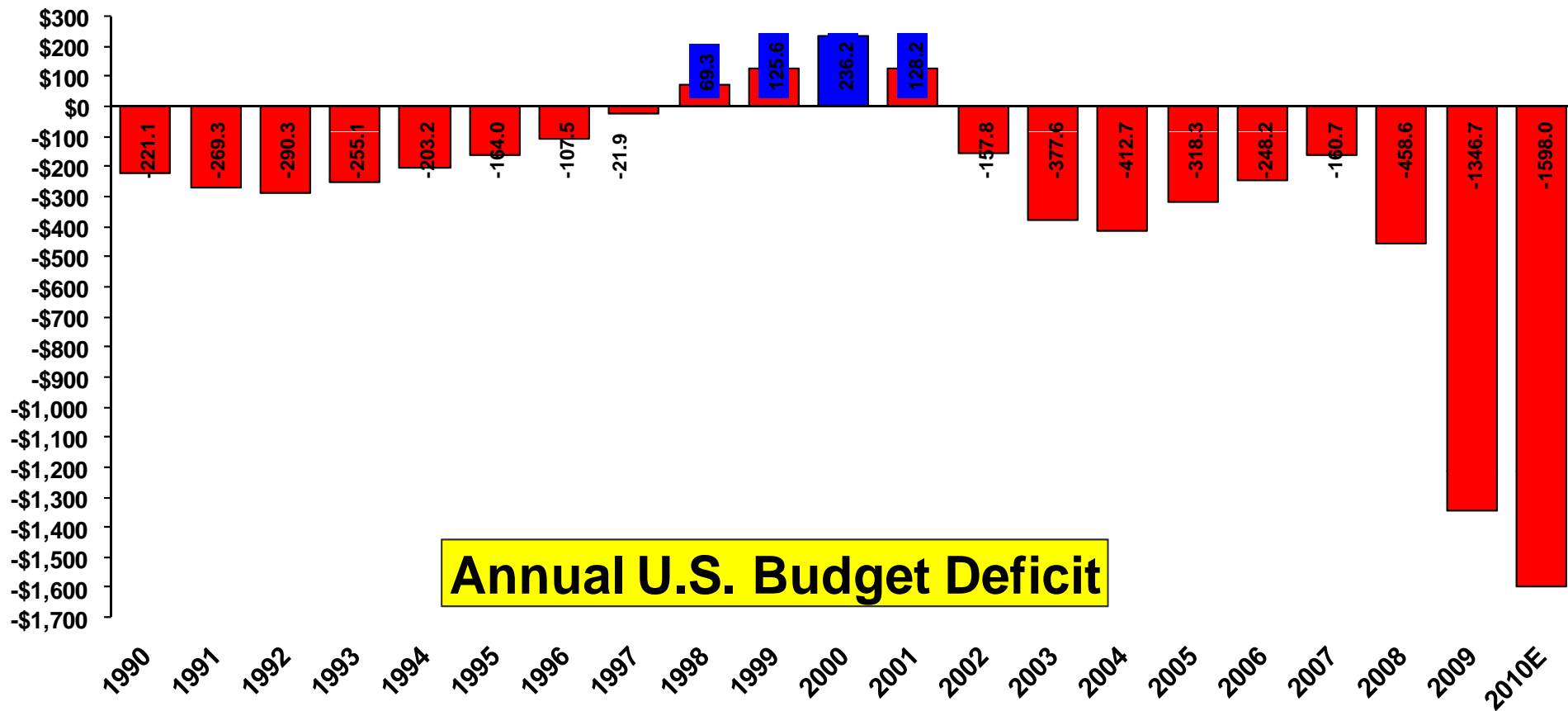
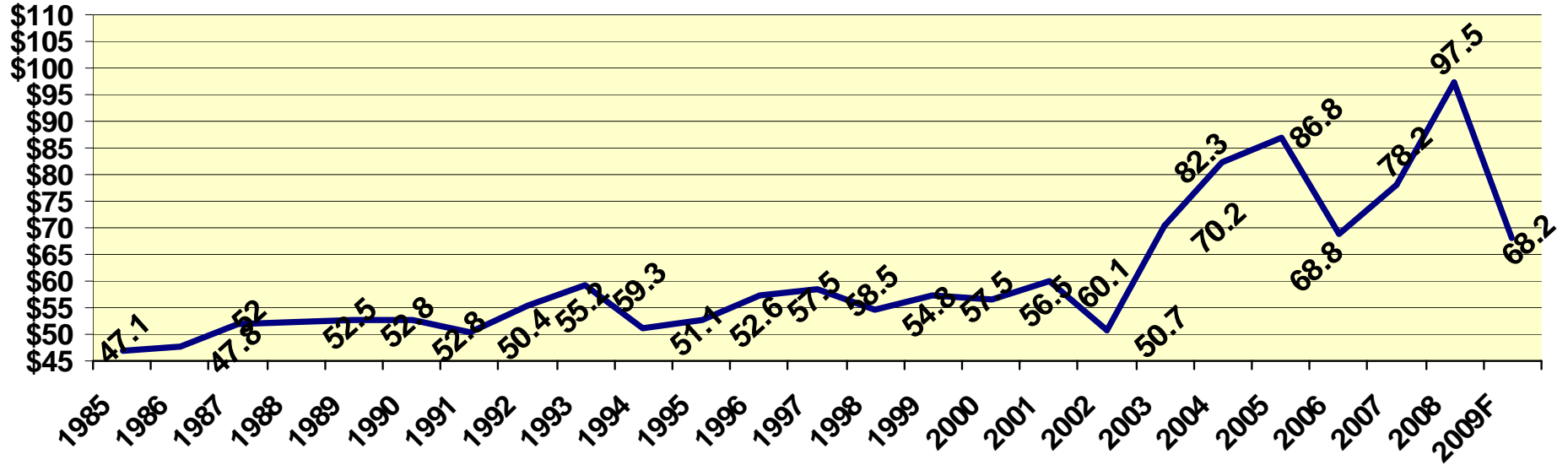


GDP Growth

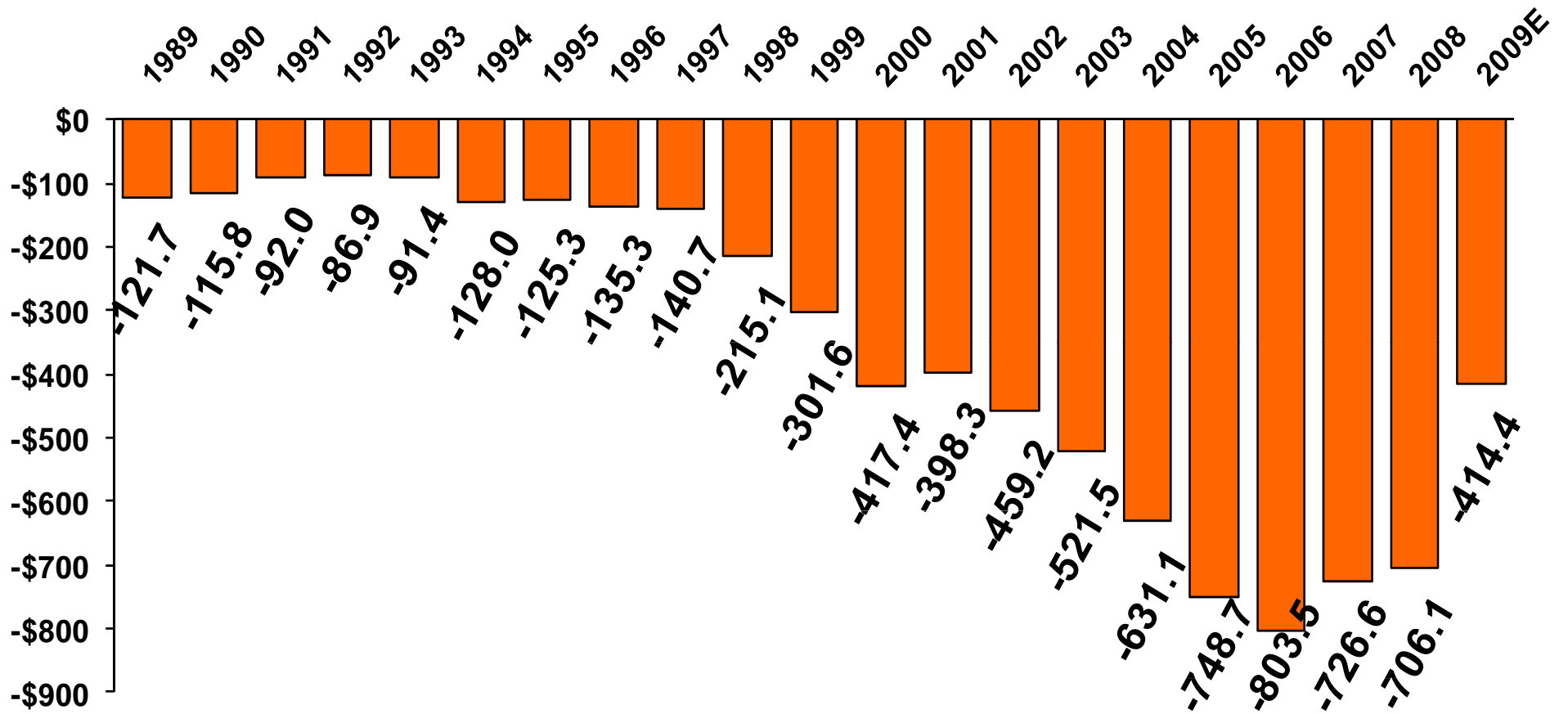




U.S. Net Cash Farm Income (\$ billion)



Annual U.S. Trade Deficit



U.S. AGRICULTURAL TRADE

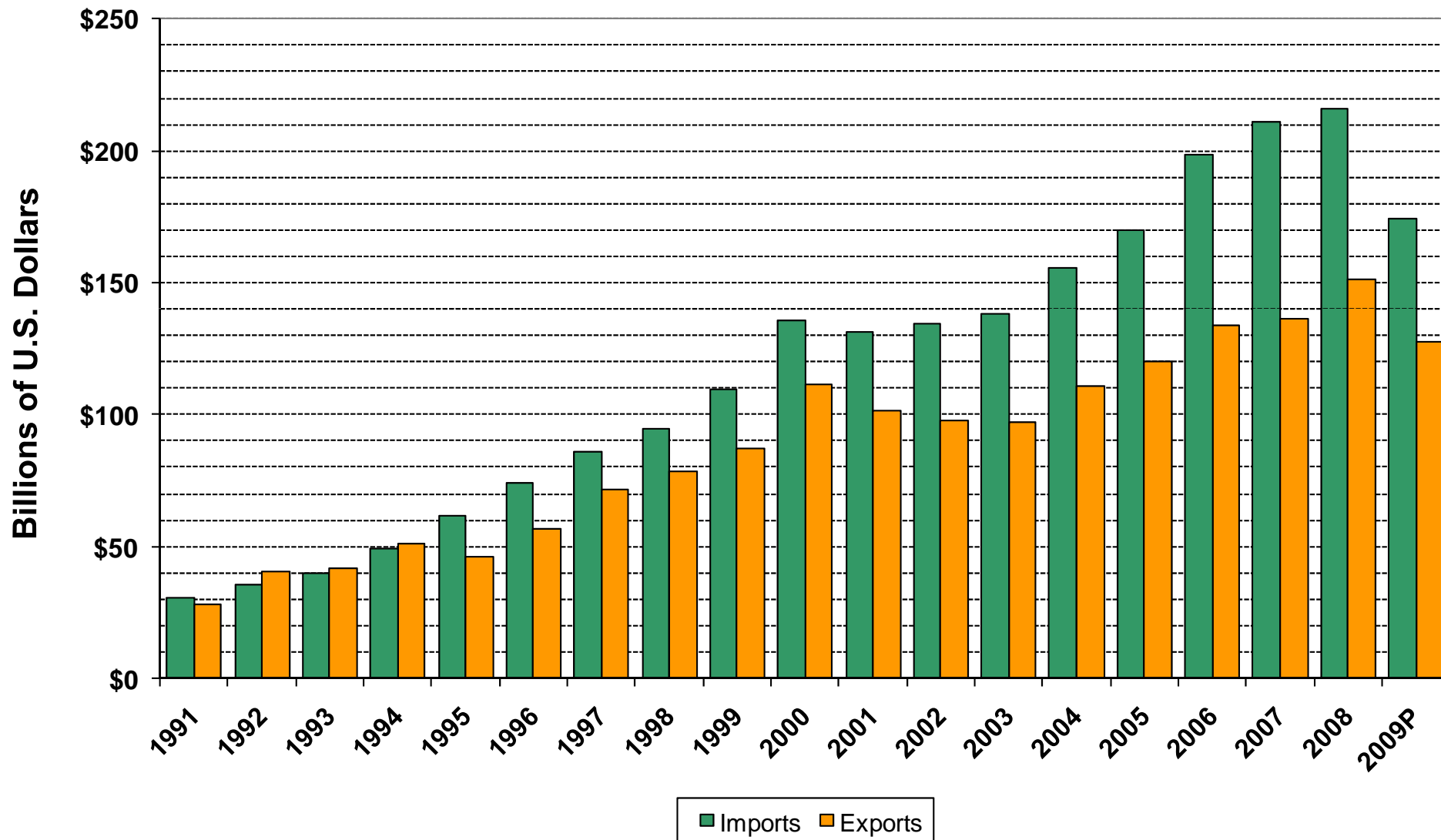


YEAR	1999	2000	2001	2002	2003	2004	2005	2006	2007	2008	2009 E	2010 F
Exports	49.1	50.8	52.7	53.1	56.2	62.4	62.5	68.6	82.2	115.4	97.5	97.0
Imports	37.5	38.9	39.0	41.9	45.7	52.7	57.7	64.0	70.1	79.3	76.0	82.0
Trade Balance	11.6	11.9	13.7	11.2	10.5	9.7	4.8	4.6	12.1	36.1	21.5	15.0

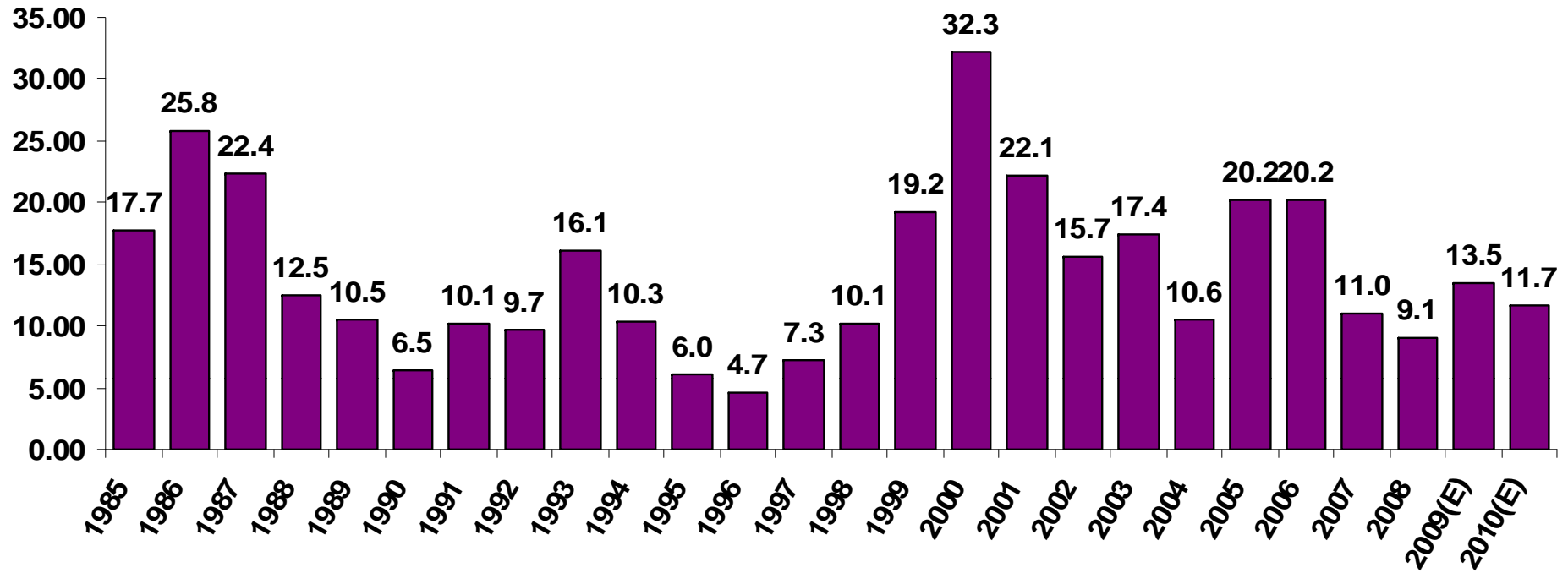
U.S. Trade with Canada



U.S. Trade with Mexico



USDA Commodity Program Net Outlays



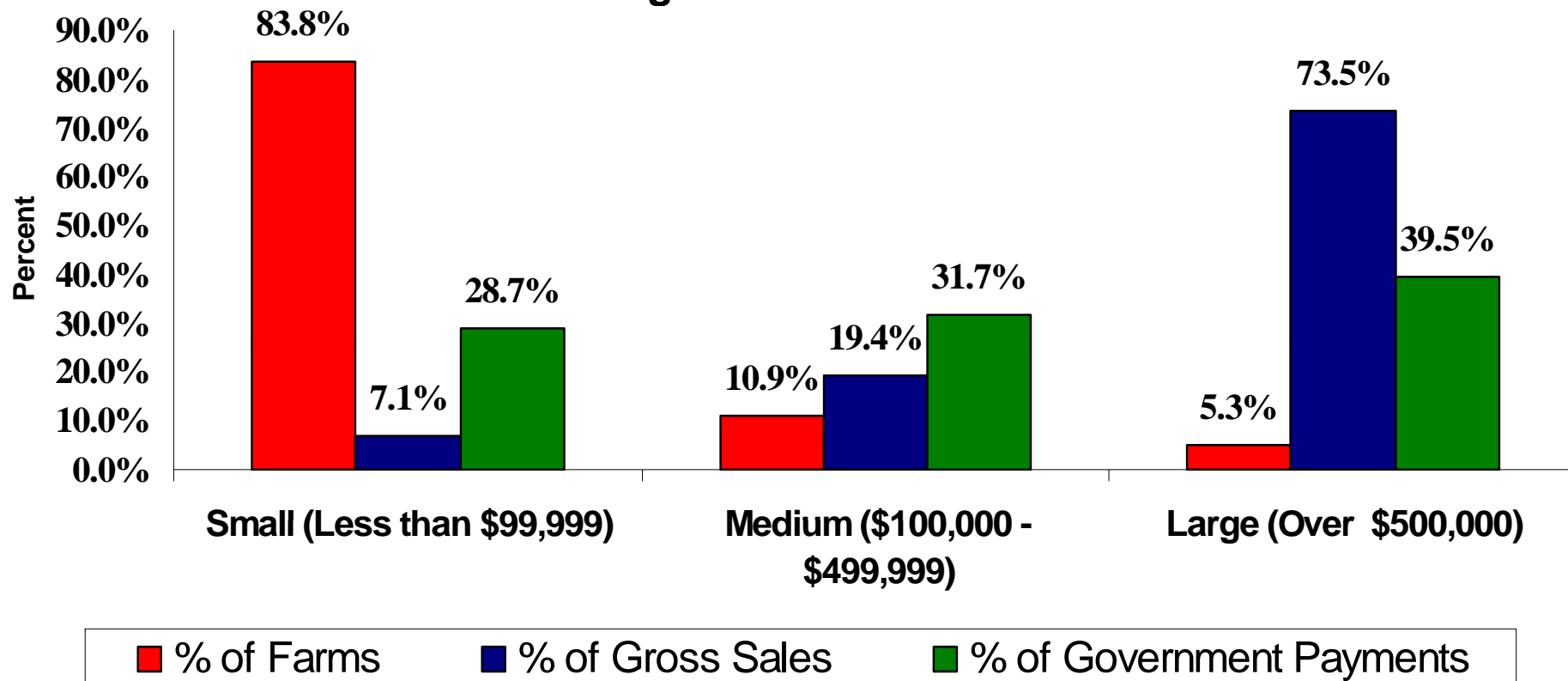
Producer Support Estimate by Country (%)

	1986-88	2006-2008	2005	2006	2007	2008
Australia	7	5	4	4	6	5
Canada	36	19	22	23	18	17
European Union	40	28	32	31	26	27
Japan	64	48	54	51	45	48
Mexico	28	14	13	15	14	14
New Zealand	10	1	1	1	1	1
USA	22	11	15	11	10	11

Source: OECD, PSE/CSE database, July 2009.

Farm Structure

Census of Agriculture and USDA-ERS



Positive proof of global warming.



***18th
Century***

1900

1950

1970

1980

1990

2006